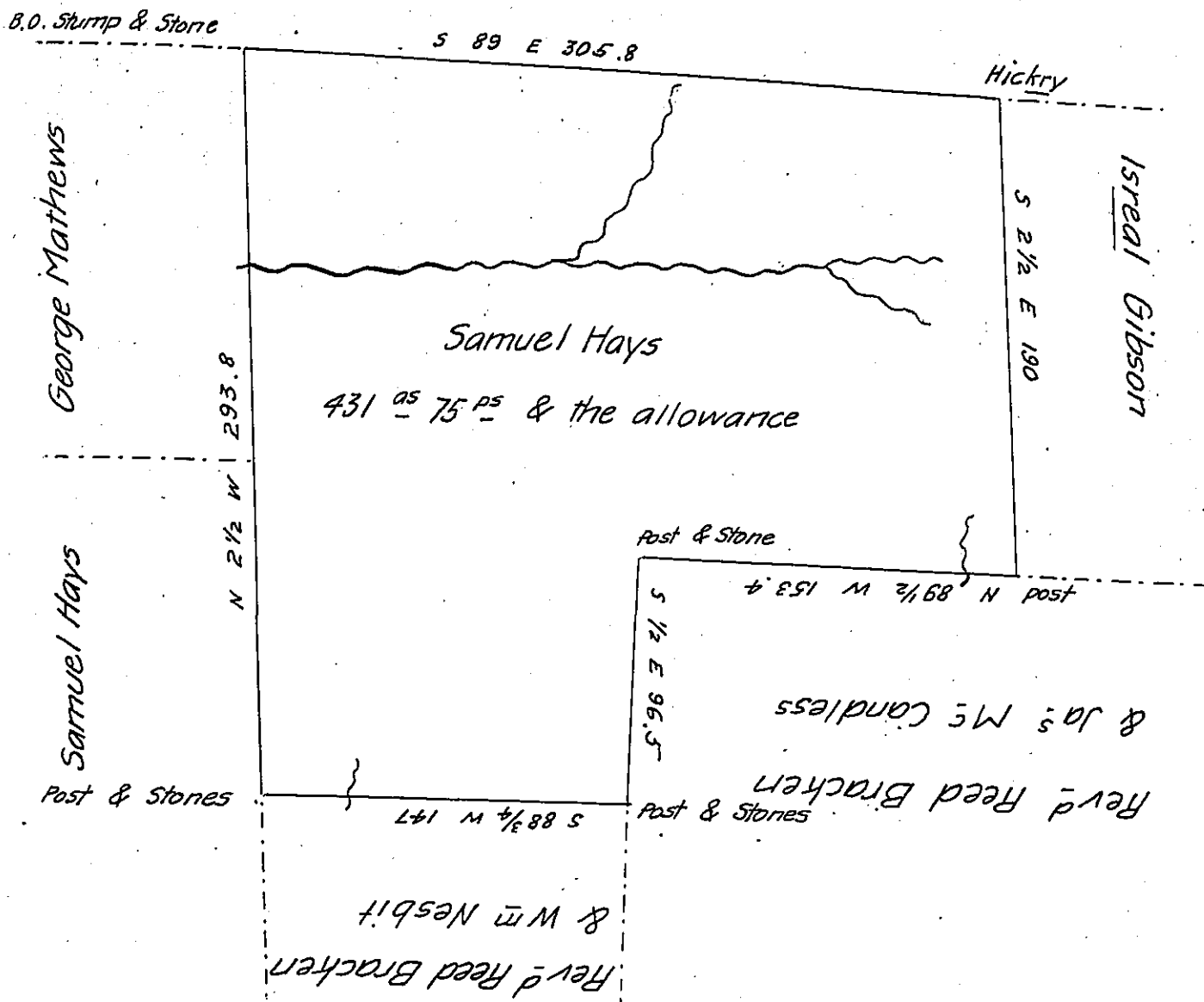


John McLure & Henry Beighly

H37-12



The above is Draft of a tract of land Situate in Conque-
 nassing Township Butler County containing four hundred thirty one
 acres Seventy five perches with the usual allowance of Six per
 cent &c. &c. Surveyed on the eight day of April A.D. 1836 for
 Samuel Hays on Settlement and improvement.

James J. Hoge D.S.

Jacob Spangler Esq.
 Surveyer General

IN TESTIMONY that the above is a copy of the original remaining on file in
 the Department of Internal Affairs of Pennsylvania, made
 conformably to an Act of Assembly approved the 16th day of
 February, 1833, I have hereunto set my Hand and caused
 the Seal of said Department to be affixed at Harrisburg,
 this twenty eighth day of March 1905

Joseph B. ...
 Secretary of Internal Affairs.